

First Nations Environmental Contaminants Program (FNECP) 2025/2026

FNECP Proposal Writing

June 25th, 2024

Presented by Dr. Amira Aker



Land Acknowledgement

I would first like to acknowledge that I am an uninvited settler living in the Treaty Lands and Territory of the Mississaugas of the Credit First Nation. I acknowledge the historical oppression of lands, cultures and the original Peoples in what we now know as Canada.

Housekeeping

- This webinar will be recorded, and the session's recording will be sent to all attendees via email.
- We will leave the last 15 minutes open for any questions from the audience, so please make note of any questions for our Q&A period.
- An evaluation survey will be sent out to all attendees at the end of the session.

Agenda

1) Background on FNECP	1:00 - 1:10
2) Description of proposal types	1:10 - 1:20
3) Deep dive into the proposal sections	1:20 - 1:45
4) Review of research proposals	1:45 - 1:50
5) Tips for writing a good proposal	1:50 - 1:55
6) Break	1:55 - 2:05
7) Presentation by former recipient #1	2:05 - 2:25
8) Presentation by former recipient #2	2:25 - 2:45
9) Questions & Answers	2:45 - 2:55
10) Wrap up	2:55 - 3:00



FNECP Mandate

The Program aims to help First Nations improve their health and wellbeing by supporting their capacity to **identify**, **investigate**, and whenever possible, **reduce** the impact of exposure to **environmental contaminants** through community-based research, monitoring, knowledge integration and risk communication.

Guiding Principles:

- Multi-disciplinary approach: Western science and Traditional Knowledge
- Community-based research
- Equity (including gender and economic)
- Respect for the First Nations principles of OCAP



FNECP Background

- The program supports First Nations communities (on-reserve) & First Nations organizations **south of the 60° parallel** in Alberta, Saskatchewan, Manitoba, Ontario, Québec & Atlantic Canada
 - First Nations in British Columbia should apply for funding under the First Nations Health Authority Environmental (FNHA) Contaminants Program
- Facilitates collaboration & building relationships between academically trained researchers & First Nations communities/organizations
- Enables communities to identify potential human health risks, to make informed decisions, & initiate risk mitigation &/or remediation actions





FNECP Contaminants of Interest

Chemical contaminants

- Persistent Organic Pollutants
- Heavy Metals
- Agricultural Pesticides
- Pharmaceutical Residues
- Naturally Occurring Toxins

Radiological contaminants

- Radon

Refer to
page **5 & 6**
on the CFP
for more
details!

JUNE 04, 2024



**FIRST NATIONS ENVIRONMENTAL
CONTAMINANTS PROGRAM FOR
COMMUNITIES AND ORGANIZATIONS
SOUTH OF 60TH PARALLEL**

2025 TO 2026 CALL FOR PROPOSALS



FNECP Call for Proposals

The **FNECP Call for Proposals (CFP)** is released annually, and the guide contains all the necessary information to develop a proposal and apply for the program.

DEADLINE



**September 27, 2024,
at 11:59 pm MT**

Proposal Types



1. Primary Research



2. Knowledge Integration



3. Risk Communication

Project outcomes must be linked to the human health impacts on community members.

- All research projects should focus on a key contaminant of concern and integrate both Western science and Indigenous ways of knowing for a **specific science-based concern**.
- The multidisciplinary approach must **involve community participation** in all phases of the research, from the concept development to planning, implementation and reporting.

1. Primary Research



Focus on environmental contaminant identification, investigation and characterization.



Collect information on the **levels of the environmental contaminants of concern in different media** (food, water, soil, or air) and **human exposure routes**



Be achievable in two years

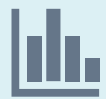


Selected proposals can receive up to **\$125,000** per project in funding **over two years**

2. Knowledge Integration



Focus on secondary research, using **existing scientific data**



Integrate **existing scientific data with community-based knowledge** for an environmental public health issue or environmental contaminants of concern



Be achievable in one year



Selected proposals can receive up to **\$25,000** per project in funding **over one year**

3. Risk Communication



Focus on **extensive risk communication** of results from **previously completed** Primary Research



Increase First Nations' awareness of new knowledge and potential human health implications



Be achievable in one year



Selected proposals can receive up to **\$25,000** per project in funding **over one year**

Program Requirements

- **Primary research projects** : in partnership with academically trained scientists (a MSc or PhD -level) with a proven background in chemical/radiological exposure assessment, environmental epidemiology and human biomonitoring, and with a track record of peer-reviewed publications in the field of the proposed project
- **Knowledge integration projects** : in partnership with a project lead with at least a bachelor's degree in environmental sciences, health sciences or education
- **Risk communication projects** : in partnership with academically trained experts (at least a BSc or MSc-level) with proven experience in conducting risk communication in the field of the proposed project
- The academic partner(s) must be identified in the proposal

Important

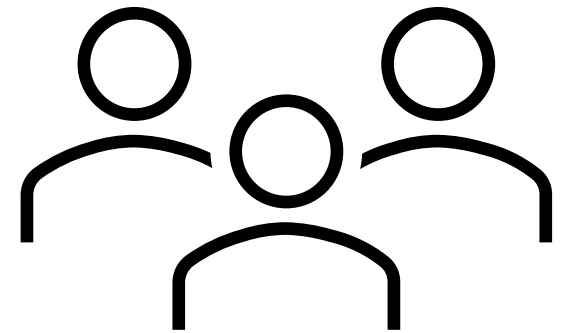
- Knowledge integration and risk communication proposals cannot be combined with a primary research proposal component.
- One proposal per First Nation community/First Nation organization
- No more than two proposals from the same Principal Investigator/Research team
- FNECP funded projects that are still in progress cannot apply for new/additional funding for the same or similar project until:
 - the conclusion of the previously funded project and
 - the project report on the analysis of results has been submitted and approved by the program



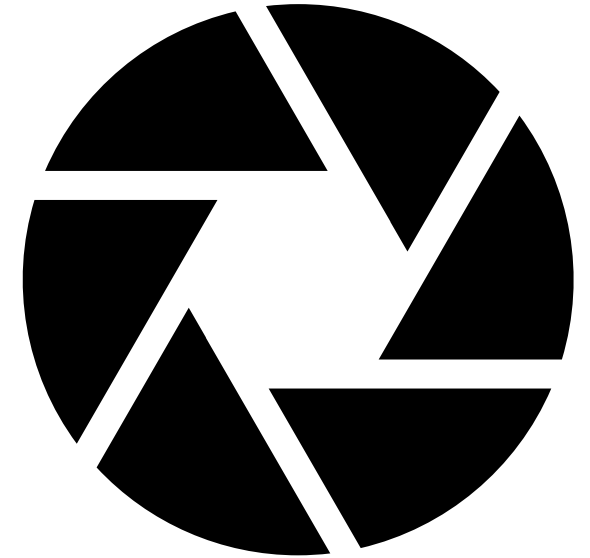
This presentation is an overview! Additional details can be found in the CFP.

Community engagement & collaboration

- Community engagement and collaboration is an essential component to all projects.
- OCAP[®] principles must be adhered to: <https://fnigc.ca/ocap-training/>
- Collaboration between scientists and communities should be present at every stage of the process, **starting from the identification of environmental contaminant concerns, to the research study design, proposal preparation, study implementation, and study completion.**



Proposal Sections



Cover page

- First page of proposal
- Include all required information listed in Call for Proposal (CFP)
- Make sure to include the names and contact information of Chief, Principal Investigator and Project Leader

Cover Page

First Nations Environmental Contaminants Program

* INSERT OFFICIAL ORGANIZATION LOGO HERE

Project title:
Research stream (e.g., primary research, knowledge integration or risk communication proposal)

Applicant information
Name of community or organization:
Address:
Telephone:
E-mail:
Name of Chief:
Address:
Telephone:
E-mail:
Name of community lead/coordinator for project:
Address:
Telephone:
E-mail:

Scientific partner
Name of academic institution:
Name of principal investigator:
Address:
Telephone:
E-mail:

Date of submission
Amount of funding requested from Indigenous Services Canada: \$
Duration of the project (e.g., one or two years)

17

Refer to page **17** of the CFP

Plain Language Summary

- The purpose of this summary to provide a short overview of the research project (< 1 page).
- Consider the following points:
 - *Why is this important to your community?*
 - *How is this project linking environmental contaminants **to the health of community members?***
 - *What activities are you proposing to do to answer these questions?*
 - *How will the anticipated results of the project help your community?*

□ Plain language summary

(Maximum 1 page)

- Give an overview or a story that explains what you want to research.
 - Introduce the question(s) that the project will answer.
 - Why is this important to your community?
 - How is this project linked to environmental contaminants?
 - How is this project linking environmental contaminants to the health of community members?
 - How will the anticipated results of the project help your community?
- What activities are you proposing to do to answer these questions?
 - Who will be involved (for example, youth, males, females, hunters, etc.)?
 - Where and when will the project work be done?
- What are the expected outcomes or results of the project?
- How can the information from this project be useful to others?

Research proposal requirements

Throughout your research proposal you must:

- demonstrate a strong link between environmental contaminants and the health of First Nations People.

AND

- be clear that this project is driven by the community in the hopes that the outcomes will benefit that community.

First Nations Environmental Contaminants Program 2025/2026 Call for Proposals

18

Table of Contents

- Create a Table of Contents with page numbers listing each of the required proposal sections with their page numbers.

Refer to page **18** of the CFP

Table of contents	
Community background	4
Project description	5
Rationale	5
Objectives	6
Methodology	6
Site Selection	6
Fish Sample Collection	6
Data Interpretation	7
OCAP	8
Activities/outcomes Strengthening capacity Traditional knowledge Youth	8
Activities	8
Expected Capacity Building for Proposed Study	9
Traditional Knowledge for Proposed Study	9
Expected Youth Involvement for Proposed Study	10
Work Plan and Timelines	10
Timeline	11
Project Team	11
Project team/partners	12
Communication and/or Dissemination plan	15
Knowledge Translation Plan	16
Project Evaluation	16
Budget	17
Letter of Support from a Mandated Authority	18
References	19
Appendices	21
Resumes/CV	21

Community Background

- Provide information on the community and describe why this project is important (1-2 pages)
 - *Community information can include the history of the community, information on the population, and history of the contamination*
- Describe why the community is vulnerable to environmental contaminants
 - *Past/present industrial activities, dependence on country foods, etc.*
- Are environmental contaminants and their effects on health an issue for specific members of your community?

Refer to page **18 & 19** of the CFP

Project Description

- This is the largest section of the proposal and includes the following sub-sections :
 - Introduction
 - Rationale
 - Objectives
 - Methodology
 - Activities and outcomes
 - Strengthening capacity
 - Traditional Knowledge
 - Youth engagement

Refer to page **19-22** of the CFP

Project Description - Introduction

- Describe the project type, its purpose, and its scope
- Provide a literature review that summarizes any previous research on your topic (1-2 pages) with references
 - *Describe other relevant or similar projects undertaken in your First Nations community*
 - *If no information exists, please indicate this*
- Describe how your project will build on previous research/projects or answer a new question
 - *Indicate if this project is a continuation of any other community research project*

Refer to page **19** of the CFP

Project Description - Rationale

- Describe the rationale for conducting the specific project you are proposing (0.5 – 1 page)
- How have environmental contaminants affected the health of your community and how might they affect your community in the future?
- Have steps been undertaken in the past to understand or solve this issue? If so, what were they and were they effective?

Refer to page **19** of the CFP

Project Description - Objectives

- The objectives are the specific planned outcomes that you intend to achieve in the short and long term.
- Include a maximum of 5 objectives with active verbs.



Short-term: Food samples will be collected & analyzed for contaminants.

Long-term: Raise awareness about contamination.



Short-term: To sample commonly consumed fish species from fishing locations identified by the community and analyze them for a range of per & polyfluoroalkyl substances.

Long-term: Increase awareness of contamination in local fish sources & advocate for regional/national regulation of chemical usage.

Project Description – Methodology



- Describe how you will accomplish the research activities outlined in the work plan (for example, data collection methods including community consultations, population sampling strategies, analyses of results, etc.).
- This section should be detailed enough to help the evaluator understand **exactly** what will be done and help set a specific plan in place for the project team

Refer to page **20-21** of the CFP

Project Description – Methodology (Primary Research)



Project proposals must include conventional research methodologies recommended by Health Canada that assess **human exposure** and **body burden of contaminants** through a combination of the following:

- Sampling of traditional foods, water, indoor air or soil for environmental contaminant analyses

&

- An appropriate human health exposure assessment methodology that would enable the examination of a link between environmental contaminants and human exposure

Project Description – Methodology (Primary Research)



Where can you collect **data** to address the issue of concern?

What media will be collected?

How will the samples be collected?

Where will the samples be collected from?

Who will collect the samples or data?

How will the samples be analyzed?

How will the data be assessed?

How will these contaminant levels be linked to health?

What data do we need from community participants?

Project Description – Methodology (Primary Research)

Information to be included:

- *Where will the work be conducted?*
- *How will the data be collected, analyzed, interpreted, disseminated and stored?*
- *Where and when will sampling take place?*
- *Who will participate in the study (for example, youth, males, females, hunters, etc.)? What sampling method will be used? How many people will be selected?*
- *How many samples of water, sediments and types of plants, mammals or fish will be collected? What tissues of animals will be selected?*
- *Who will analyze the data and interpret the results?*
- *How will the data be protected and shared throughout the research project?*
- *Who will own the data?*
- *Who will be able to access the data?*
- *Who will have control over the data?*
- *How will the First Nations' principles of ownership, control, access and possession (OCAP) be respected?*
- *Which accredited laboratory will you use to analyze your samples for contaminants?*

Project Description – Methodology (Primary Research)



- Data can be **collected** using any of the following: interview transcripts, environmental samples, biological samples, photos, videos, etc.
- Please identify the activity number for each activity.
- Examples used in the past include:
 - *Fish, mammals, plants or water sampling and assessing community members' exposure to the sampled media*
 - *Hair, blood, urine, or breast milk sampling*
 - *Administration of a 24-hour dietary recall or a food frequency questionnaire to the same individuals as those who supplied hair, blood, urine or breast milk samples*
 - *Administration of semi-structured interviews to the same individuals as those who supplied hair, blood, urine or breast milk samples*
 - *Social, health and lifestyle questionnaire*

Project Description – Methodology (Primary Research)



Moose meat will be collected and analyzed for pesticides at the laboratory.



Due to the importance of moose as a diet in the community, samples of meat will be collected from hunters. To ensure a representative sample, at least 15 samples will be collected. If we are unable to collect 15 samples from hunters, community freezers will also be accessed. Community members will be hired and trained to complete all sampling. After capture, samples will be stored in Site A, and transferred to Laboratory X for mercury measurement using the following validated methods.

Project Description – Methodology (Primary Research)



Questionnaires will be sent to community members on eating habits.



A dietary questionnaire will be administered to community members, targeting adults aged 20 years and over. Participants will be recruited via the FM radio and reaching out to community centers. We will aim to recruit at least 30 participants to ensure a representative sample of our targeted group. The questionnaire will include questions on socio-demographics and the frequency and quantity of traditional foods consumed. A copy of the questionnaire is included in Appendix X. The questionnaire is based on a validated questionnaire used in another First Nation community (ref).

Specific Requirements for Radon Studies



- Designed as a public health intervention research project
- Project must include a household questionnaire to collect baseline information:
 - *on age and number of residents, smoking habits, time spent in rooms, room usage, basement, type of house, conditions of house, etc.*
- Radon risk/exposure assessment is optional
- Studies on radon **must** include mitigation, **radon assessment alone is not sufficient**

Radon Study Questionnaire

Where did you place the radon detector?

1. On what floor? (Remember, it should be on the lowest lived-in level of your home, where you spend a minimum of 4 hours per day.)

Basement (underground)..... Q₁
Main (first) floor (on the ground)..... Q₂
Second floor (above ground)..... Q₃
Other (SPECIFY) _____ Q₄

2. In which room in your home was the detector placed?

Rec room Q₀₁
Storage room Q₀₂
Living room Q₀₃
Bedroom Q₀₄
Den/Study Q₀₅
Other (SPECIFY) _____ Q₀₆

3. The instructions asked that you place the detector in a certain location. We know some homes may not allow you to place the detector as indicated. Were you able to place the detector according to the instructions?

Yes Q₁ ⇒ SKIP to Q5
No Q₀

Ref: <https://www.canada.ca/en/health-canada/services/environmental-workplace-health/reports-publications/radiation/cross-canada-survey-radon-concentrations-homes-final-report-health-canada-2012.html>

Specific Requirements for Radon Studies



- Primary research projects focusing on radon exposure assessment and monitoring should provide:
 - Letter of support from the Director of Housing supporting the project and express a commitment to request and provide funds for radon remediation in homes with radon levels exceeding the Health Canada radon guideline (200Bq/m²).
 - FNIHB does not have funds for remediation



Project Description – Methodology (Knowledge Integration & Risk Communication)

Where can you find information to address the issue of concern?

What scientific publications will be included?

How will you locate the sources of information?

How will Traditional Knowledge be collected?

How will the data from multiple sources be integrated?

Project Description – Methodology (Knowledge Integration & Risk Communication)



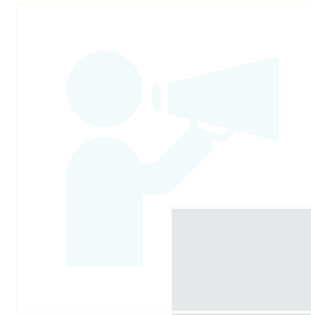
- Describe the scope of work
- Provide details on search strategy and types of knowledge (for example, published, verbal communications, interviews, surveys, community reports and others) and the type of publications selected (for example, peer-reviewed journal articles, books, government documents and others).
- List knowledge integration methods and other search tools (for example, databases) that will be part of the project and will be consulted to find relevant sources.
- Describe inclusion and exclusion criteria for the selection of literature.
- Outline the planned report structure for a knowledge integration or risk communication project.

Project Description – Methodology (Knowledge Integration & Risk Communication)



Knowledge Integration

- Concerns surrounding PFAS in traditional foods
- Meetings with community members and Elders
- Literature review
- Two forms of knowledge merged



Risk Communication

- Target audience are homeowners living in the community
- Communication materials created with simple language
- Online and physical sites selected for sharing knowledge
- Evaluate communication strategy



Detailed descriptions

Project Description – Activities & Outcomes

- Describe the research activities that will take place during your research project and connect each activity your project objectives.
- State the expected results and project deliverables (for example, reports, publications, conferences and workshops, communication initiatives and materials such as newsletters, pamphlets, plain-language summary, videos and others).

“Determine the quantity and frequency of traditional foods consumed by community members over the prior year” could be, for example:

Activity 1: “Using the band council list, randomly select 40 individuals of different age and gender groups to participate in the research.”

Activity 2: “Inform selected participants about the project and seek their written consent.”

Activity 3: “Administer a food frequency questionnaire to these participants.”

Project Description – Strengthening Capacity

- Explain how your project will provide and engage your community with new tools, knowledge and methods to increase the ability to better understand and manage the health impacts of environmental contaminants.
- Provide detailed information on how this project will support community members' engagement in research.



Refer to page **22** of the CFP

Project Description – Traditional Knowledge

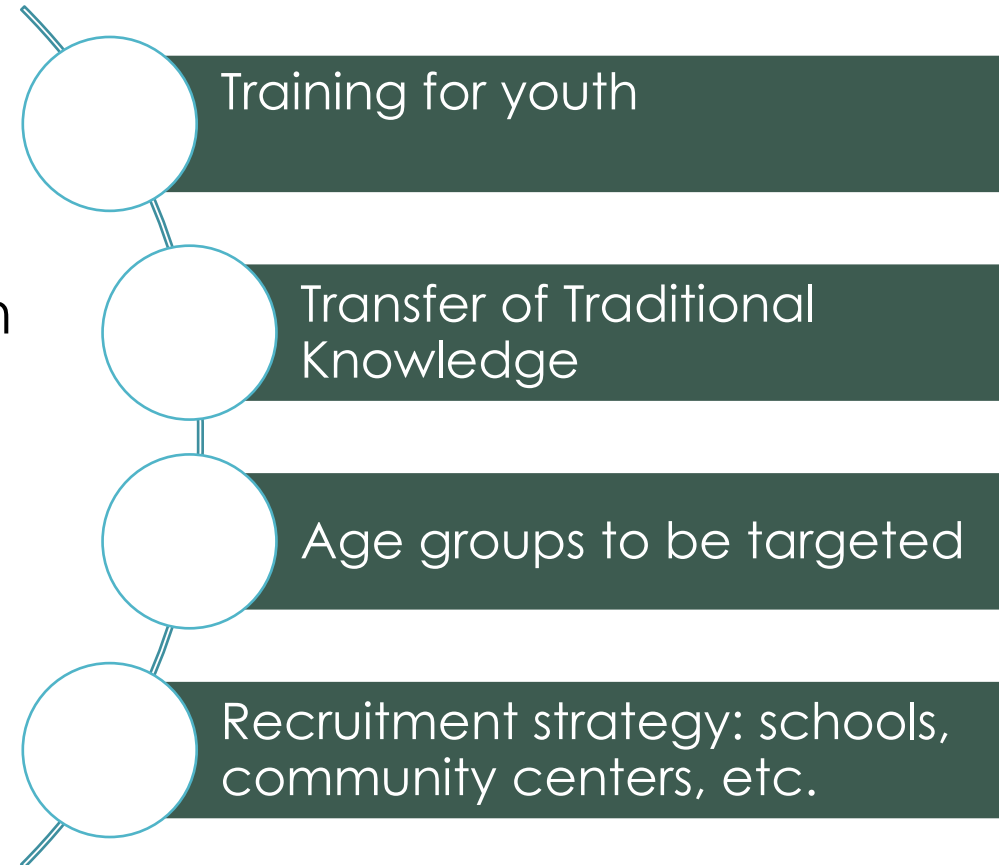


A study found higher levels of mercury in women versus men; however traditional knowledge pointed to men consuming more fish than women. Further conversation with communities and elders revealed that the specific organs consumed by women may explain the differences in results.



Project Description – Youth engagement

- The FNECP strongly encourages the engagement of youth in projects.
- Please provide details as to how youth will be involved.
- Give examples of planned activities & how they can or will be beneficial (for example, new skills & knowledge acquired).



Workplan and Timelines

- Prepare a table with a list of each activity of the project with an assigned activity number, the timelines for each activity and any factors that might affect timing (for example seasons, availability of resources, migration patterns, etc.).

Table: Workplan and timelines

Project objective	Activity description	Timeline/dates	Factors affecting timing	Activity #

Project Team and Partners

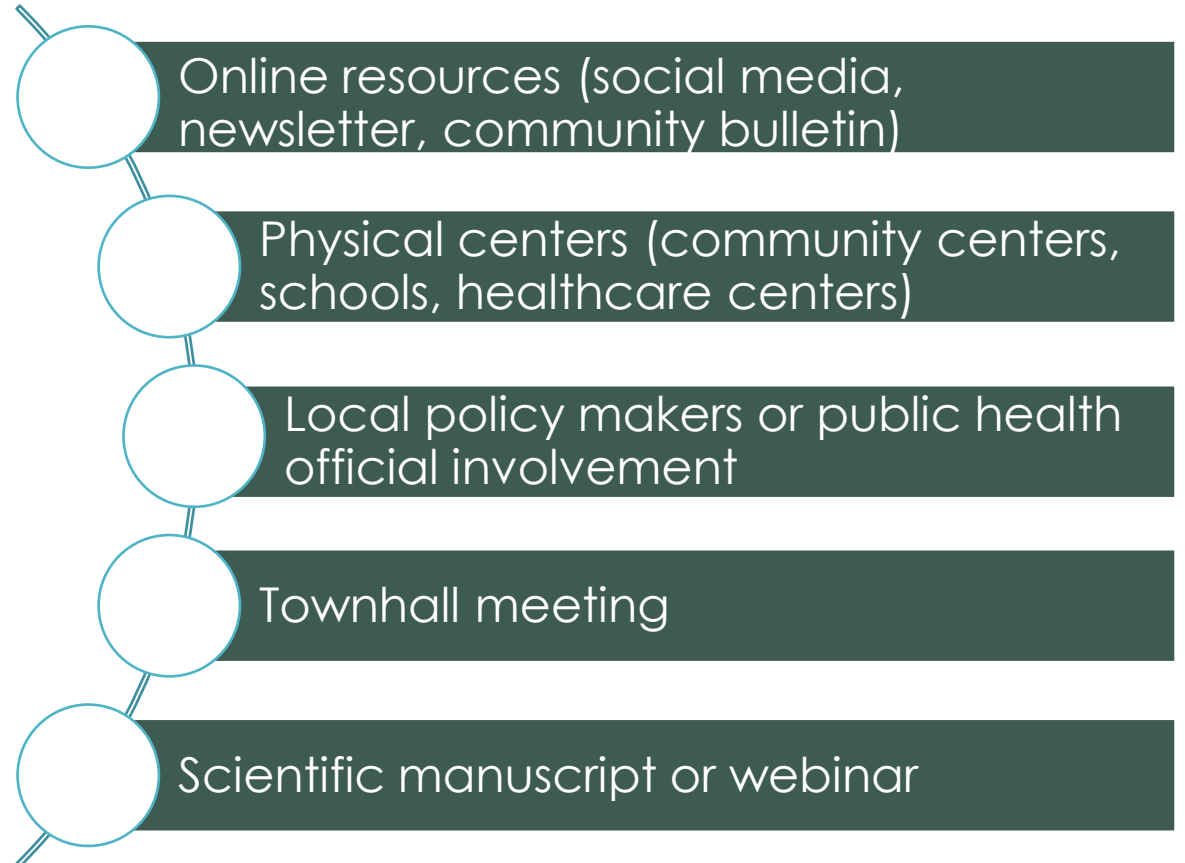
- Please provide a table with all individuals who will be involved in the project including their name, affiliation, role within the project and the associated activity number (from the work plan) in which they will be participating.
- List all the partners that will be involved in this project (for example, First Nations, government, agencies, groups, associations, academics, professionals, financial contributors, etc.).

Table: Project team and partners, their affiliation and project roles

NAME	CONTACT INFORMATION (PHONE/EMAIL)	AFFILIATION	PROJECT ROLE	ASSOCIATED ACTIVITY #

Communication & Dissemination Plan

- Describe in detail how the results will be communicated to the community throughout the project.
- Describe how the results will be communicated or disseminated to other interested parties & decision-makers.
- Describe how the project's results will be communicated regionally, nationally or internationally



Refer to page **24** of the CFP

Project Evaluation

- Indicate how the project will be evaluated & by whom.
- How will you determine the successes & lessons learned?

Suggestions for developing your project evaluation
(Not mandatory but very useful)

Evaluation techniques

Below please find some evaluation techniques you might want to include as part of your project evaluation:

Activity logs

Track regular activities and provide a running account of what happened. These can provide anecdotal information that is not usually captured in more formal surveys or consultations. Keeping an activity log is a great tool to assist in writing reports, providing regular updates on initiatives and providing valuable qualitative data to evaluations.

Surveys

Surveys consist of a series of closed or open-ended questions. They can be done by hand, on-line, over the telephone and through email or face-to-face. Surveys are easy to administer, but developing questions that are easy to understand and measure can be difficult. Plan to test out survey questions on colleagues and members of your target audience ahead of time so you can modify them accordingly.

Interviews

An interview is a conversation between 2 or more people where questions are asked by the interviewer to obtain information from the interviewee. Interviews can be done over the telephone, on the radio or face-to-face.

Focus groups

Focus groups provide opportunities for an in-depth engagement. Traditionally they consist of between 6 to 10 participants with a particular interest, involvement or stake in the subject being discussed. During focus groups, a facilitator leads the group through a series of questions with a recorder summarizing the discussions.

Budget

- Provide a detailed budget breakdown for core expenditures, administrative/management costs & funding/support from other sources for each year of the project, as well as a budget for the duration of the project.

- Some sample categories to include in your budget:
 - *Salaries & wages*
 - *Honoraria*
 - *Professional service fees*
 - *Travel, accommodations & meals*
 - *Equipment & facilities*
 - *Laboratory expenses*
 - *Administrative & management costs*
 - *Operating costs*
 - *Other costs*

EXPENSE	DESCRIPTION	INDIGENOUS SERVICES CANADA FUNDING REQUEST	FUNDING FROM OTHER SOURCES (INCLUDING IN-KIND)	COMMENTS	ASSOCIATED ACTIVITY #
Core Expenditures					
Salary					
Salary					
Salary					
Honoraria					
Benefits					
Professional services					
Translation					
Training fees					
Transportation, accommodation and meals					
Equipment and facilities					
Laboratory expenses (detailed with cost per sample)					
Other					
Core Expenditures Subtotal 1					
Administrative/Management Costs (maximum 10% of total request from Indigenous Services Canada)					
Office materials/supplies					

Research Ethics Review

- Every human health research project involving First Nations will be required to obtain an approval certificate from at least one ethics review board or committee before receiving funding approval from the FNECP (for example, University research ethics board (REB) or Health Canada-PHAC REB).
- **The research ethics review does not need to be completed at the time of application** but will be needed before funding can be provided. Your project team will be responsible for this part of the review.

Refer to page **28** of the CFP

Letters of Support from Mandated Authority

- Letter(s) of support by a mandated authority (Chiefs, Chief Executive Officer of the First Nations organization or community, etc.) for **each community involved in your project** should be included in your submission. The letter(s) should be on official letterhead and be signed by an authorized person.
- All successful projects are required to provide a Band Council Resolution **from the community leading the project** at the time of funding.

References

- Include reference to any documents, publications, or third-party information that you used in writing your proposal. This is a very important part of your proposal as it shows that your research would build on existing knowledge.



Refer to page **28** of the CFP

Appendices

- This could include the following:
 - Relevant background information (if available)
 - Relevant project materials that you may have ready, such as interview questions, questionnaires, laboratory quotes, consent forms, etc.
- The Appendices in the CFP provide sample questionnaires and sample consent forms (pages 30-40)

Resumes/CVs for each project team member

- Resumes or CVs are required to show that the person conducting the research & the research team members have the knowledge & skills required to successfully run this research project.
- All scientific project team members & the community project manager/lead/coordinator must provide their resumes or CVs along with a list of relevant publications



Refer to page **29** of the CFP

Review of Research Proposals

Mandatory criteria review

- Internal review
- Assess the merit of the proposal against major criteria

Science peer review

- External science peer review
- Assessment of project design, team expertise, methodology, timeframe and budget

Community-based peer review

- First Nations-led selection committee
- Assessment of community involvement, strengthening capacity, integration of Indigenous Knowledge and budget

Proposal Submission

- Proposal should not exceed 20 single-sided pages excluding cover page, appendices, resumes/CVs.
- Proposal must be submitted in size 12 font formatted for 8.5" x 11" size paper.
- Proposal must be provided in English or French.
- Complete proposals must be received by ISC no later than September 27, 2024, at 11:59 pm Mountain time.

Electronic submissions: fnecp-plcepn@sac-isc.gc.ca

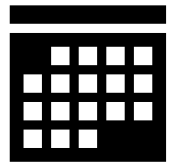
Hard/paper-copy submissions can be sent to:

First Nations Environmental Contaminants Program
Environmental Public Health Division
Office of Population and Public Health
Population Health and Primary Care Directorate
First Nations and Inuit Health Branch
Indigenous Services Canada
A.L. 1919D
10 rue Wellington, Suite 1455,
Gatineau, QC, K1A 0H4



Refer to page **7** in the CFP

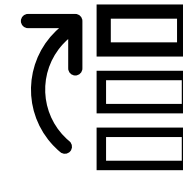
Tips for writing a good proposal



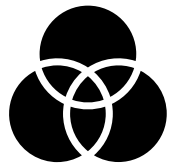
Start early



Make sure to investigate a link to human health



Prioritize community concerns



OCAP principles



Collaborate!



Be specific & detailed



Integrate Indigenous Knowledge and Western science

An aerial photograph of a dense forest with a river flowing through it. The trees show a mix of green and autumnal colors like yellow and orange. A small boat is visible on the river. The text 'BREAK TIME' is overlaid in white on a semi-transparent grey rectangle.

BREAK TIME

An aerial photograph of a forest with a river. The trees are in various stages of autumn, with some showing vibrant orange and yellow leaves, while others are still green. A dark blue river flows through the lower part of the frame. A log is visible on the right side of the river. The text "Presentation by Guest 1" is overlaid in white on a semi-transparent grey rectangular background.

Presentation by Guest 1

Presenter #1

- Community: North Shore Mi'kmaq District Council
- Presenters :
 - *Bianca Langille* - Emergency Program Manager I
 - *Jared Bishop* - Emergency Program Coordinator



An aerial photograph of a dense forest with a river flowing through it. The trees show a mix of green and autumnal yellow and orange colors. A semi-transparent white rectangular box is overlaid on the left side of the image, containing the text "Presentation by Guest 2".

Presentation by Guest 2

Presenter #2 EN

- **Community**

- Eagle Lake First Nation

- **Presenters**

- *Alison Fraser* - Environmental Scientist , EnCompass Environmental
- *Daniel Morriseau* - Co-manager of the Lands and Resources Dept at Eagle Lake First Nation

An aerial photograph of a dense forest with a river winding through it. The trees show a mix of green and autumnal yellow and orange colors. A semi-transparent white rectangular box is overlaid on the left side of the image, containing the text "Questions & Answers" in a white, sans-serif font.

Questions & Answers

Additional Information

For more information on the FNECP

contact:

fnecp-plcepn@sac-isc.gc.ca or call (613) 293-5517

& visit:

First Nations Environmental Contaminants Program

<https://www.sac-isc.gc.ca/eng/1583779185601/1583779243216>



First Nations' Portal
on Environmental Contaminants and Health

<https://fnecp-plcepn.ca/>

also visit FNECP feature stories

<https://www.sac-isc.gc.ca/eng/1655904022428/1655904069592>

For examples of successful projects!

Thank you!

**The program is
planning on hosting
another webinar.**

**Stay tuned for more
details coming soon!**

